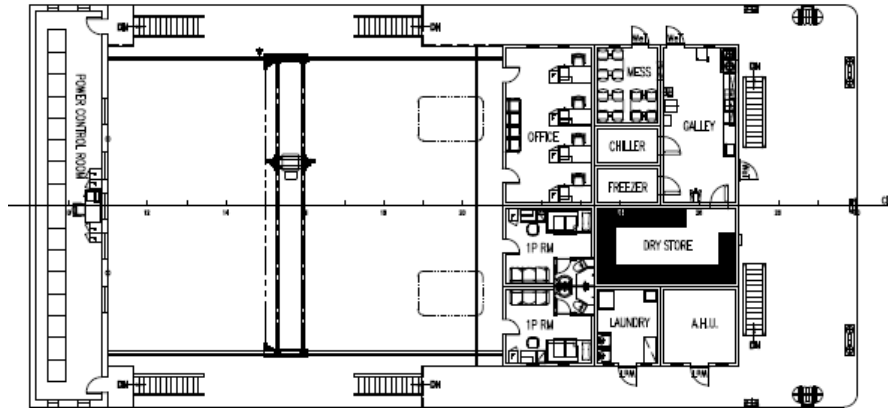


Cargo Equipment Solutions, Inc.

12301 SW 128th Court, Suite 104, Miami, Florida 33186
Phones: (1) 305-259.4537 / 305-259.4538 Fax: (1) 305-259.4539
E mail: sales@cargoequipmentsolutions.com

**Power Express
1020 MPGV**



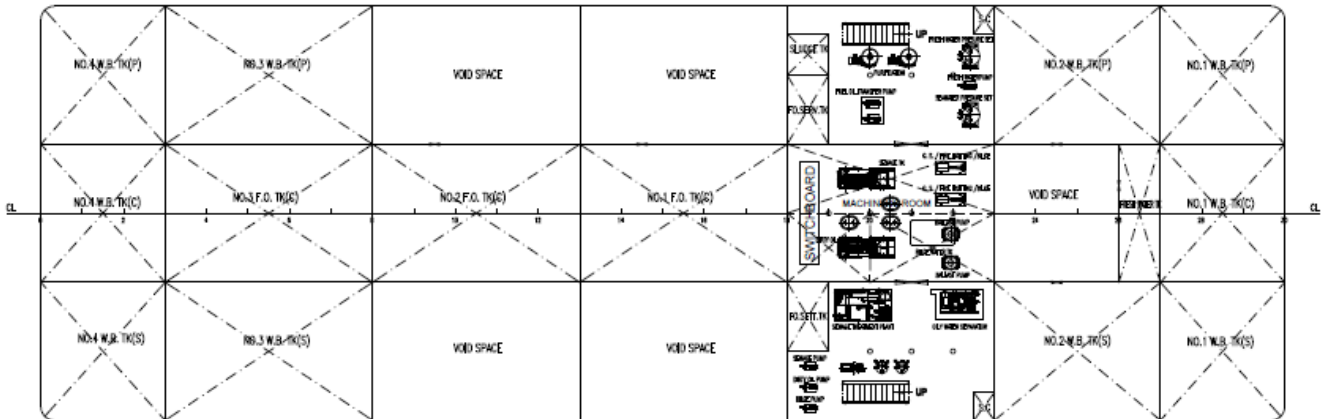
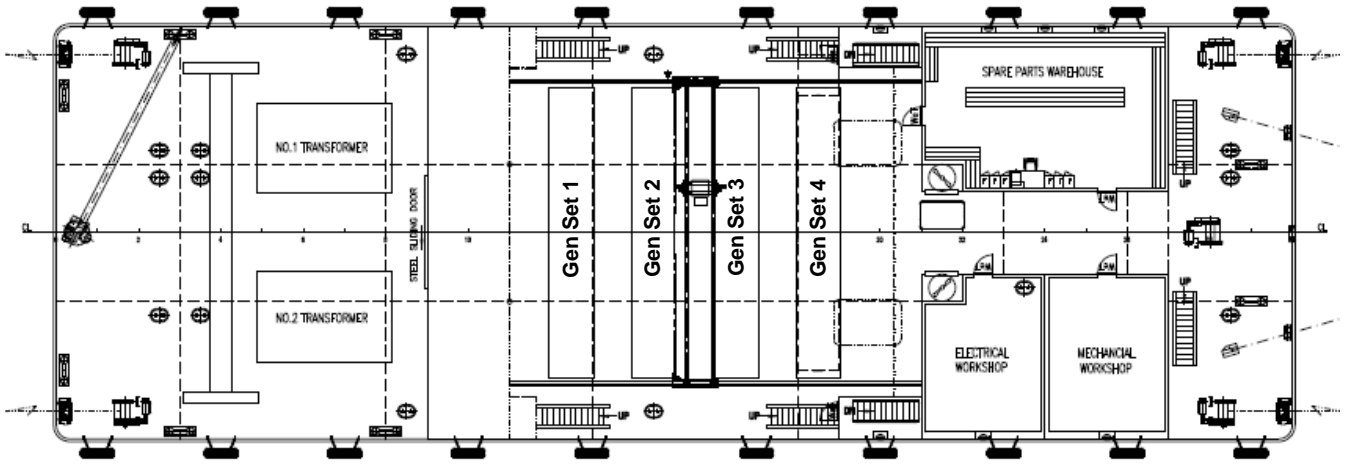
BARGE FOR ELECTRIC POWER GENERATION

- ✓ From 10 to 20 Megawatts Instalation.
- ✓ From 4 to 8 Power Generators.
- ✓ Distribution Substation a bord for 13.800 vAC.
- ✓ Synchronized System to the main power lines.
- ✓ 10 to 12 month for Construction & Delivery.
- ✓ 10 days Fuel Autonomy.
- ✓ International ABS Certification.
- ✓ Crew Rooms, Office and Workshop a board.



The Power Express 1020 is a barge MPGV with high mobility and maneuverability in tight spaces, and to carry it quickly and effectively to remote villages near the coast or a river supplying large amounts of energy with a minimal investment in mainland.

Its price is highly competitive with conventional systems that exist already on land, having the great advantage of being used as a temporary facility and may be mobilized to a new location if required.



Available in two versions, depending on the fuel to be used, Light Diesel or Crude Oil (HFO).

Also comes in several energy levels within the same series and two possible output voltages to the network, depending on the population, 5,000 vAC or 13,800 vAC.

FEATURES:

- ✓ Large: 54,9 mts (180' Ft.)
- ✓ Width: 18,3 mts (60' Ft.)
- ✓ Bulwark: 4,27 mts (14' Ft.)
- ✓ Draft: 2,8 mts (9' Ft.).
- ✓ Electric & Mecanic Workshop Area.
- ✓ Spare Parts Deposit.
- ✓ Individual Crew Rooms for two persons.
- ✓ Freezer for food supplies, Refrigerator, Laundry, Kitchen and Dining Room.
- ✓ Office Area & Control Room.